



Friends of  
Brisbane Botanic Gardens  
& Sherwood Arboretum

ABN 20 607 589 873  
Connect - Promote - Protect

# Lilygram

## Newsletter

Issue 2, March 2016

Let's be friends...

### CONTACTING fBBGSA

Our Website  
[www.fbbgsa.org.au](http://www.fbbgsa.org.au)  
(Membership details here)

Email  
[info@fbbgsa.org.au](mailto:info@fbbgsa.org.au)

MAIL ADDRESS  
fBBGSA, PO Box 39,  
Sherwood, Qld 4075.

**Management Committee**  
Mary Jo Katter (Director)  
Arno King (Director)  
Jeannie Sim (Director)  
John Taylor  
Bettina Palmer &  
Fay O'Sullivan (Volunteer Guides)  
Catherin Bull  
Paul Plant  
and Dale Arvidsson  
(ex officio as Curator of both BBGs)

**Newsletter Editor:**  
Jeannie Sim

**Membership Counter**  
24 March 2016: 82



Brisbane Lily planted at October 2015 Launch.  
Check out lovely blooms in November [MJK]



**DELECTABLE PLANT TREASURE:**  
Sacred Lotus, ponds near Administration Building, at  
Mt Coot-tha Botanic Garden (J Sim 5 March 2016).

## CONTENTS:

Governance.....	1
New Members! .....	1
New Sources!.....	2
Bump the Funny Bone !! .....	2
INSTAGRAM News.....	2
WEBSITE news .....	2
FACEBOOK news.....	2
Postcards .....	3
PLANTSpeak.....	4
History EXPOSÉ.....	5
FoSA news.....	7
OBBG news .....	8
MCBG Visitor Centre .....	10
Volunteer Guides news .....	11
May Events! .....	12
Our Activities .....	12
CALENDAR .....	13
Membership form.....	14

## EDITORIAL

### Welcome to our second issue!

Our regular newsletter will be sent out by email to all connected members and available on our website. We'll print out a colour copy for the MCBG BCC library to share around as well. The intention is to publish **quarterly** issues: March, June, September, and December 2016, and beyond.

And since there were no complaints received about the name of newsletter, *Lilygram* it is!

— Jeannie Sim

## GOVERNANCE

§

### Funding priorities

Exciting news came in January, with the arrival \$75,000 donated by Brisbane City Council. We plan to use that money wisely to kick start operations that will also raise more money and gain more members. For example, our corporate branding, website, social media contacts all need to be put on a professional footing. Jim Dobbins has been magnanimous with his pro bono graphics and media design for us and we thank him for all his help and patience. Paul Plant has come on board the Management Committee and steering our promotions and publicity efforts.

### Annual General Meeting

We decided against that Special General Meeting in April and will focus on working as a team of initial Directors until we stage the first AGM in August.

### Making things Happen

Now we have reached accord with Friends of Sherwood Arboretum, we are forging ahead with events and activities. However, we still need people to do things, organise events, activities and so on.

Please put your hand up if you can help. The first priority is getting the **Growing Friends** established. Please contact [info@fbbgsa.org.au](mailto:info@fbbgsa.org.au) if you want to be part of this activity group!

— Mary Jo Katter.

## New Members!

Each quarter, we'll greet and welcome all the new folks to join our gang!

### December:

Darryl Mills, Anne Cullinan,  
Anita Armstrong, Mario Rey-Conde  
and Marjorie Shackleton.

### January:

Leona Romaniuk and Judy Haines.

### February:

Sally Hunter and Amanda Meads.

### March:

Paul Harrop.

## New SOURCES!



This new column will highlight any new blogs or books or magazines that are interesting (or even exciting!).

### Tim Entwisle tweets!

Tim is a botanist and currently Director and Chief Executive, Royal Botanic Gardens Victoria.

<https://www.rbgv.vic.gov.au/staff/prof-tim-entwisle/prof-tim-entwisle>

Tim Entwisle is also an eager blogger <http://talkingplants.blogspot.com.au/> and tweets on twitter <https://twitter.com/timentwisle>

He also recently published a thought-provoking proposal to rename our Australian seasons and add 2 more! Entwisle, Tim 2014.

*Sprinter and Sprummer: Australia's Changing Seasons.* Clayton, VIC: CSIRO publishing.



## Bump the Funny Bone !!

### Lady GAGA Ferns!

#### New Genus of Ferns: *Gaga*, named for Lady Gaga



"A gametophyte, with its characteristic heart-shaped structure, which was deemed similar to Gaga's wardrobe during her performance at the 2010 Grammy Awards"

**You have been warned!**

[https://en.wikipedia.org/wiki/Gaga\\_%28genus%29](https://en.wikipedia.org/wiki/Gaga_%28genus%29)



## INSTAGRAM news



Another social media outlet has been established. If you are on Instagram please check out our new account: @brisbanebotanicgardensfriends



## WEBSITE news



### [www.fbbgsa.org.au](http://www.fbbgsa.org.au)



Another launch achievement was the creation of our first website, designed by Jim Dobbins with Mary Jo Katter advising and representing the wishes of the Steering Committee.

We are still adding and correcting this face to the world, but the important membership application function is well and truly functional! We use **PayPal** to safely gather funds and information. Please drop in regularly to see what's new!

Future pages are planned and if you have any ideas or requests please let us know at the usual address:

[info@fbbgsa.org.au](mailto:info@fbbgsa.org.au)

## FACEBOOK news



Our three media outlets have these common intentions.

### PURPOSES:

- (1) to promote our three botanical treasures by frequent postings of photographs with commentary
- (2) to connect with like-minded organisations and individuals and celebrate all things botanical.

### Contributors:

Currently, Jeannie Sim and Mary Jo Katter are doing most of the posting!

More contributions are avidly sought! Please send in any "jpgs" to the [info@fbbgsa.org.au](mailto:info@fbbgsa.org.au) address! Already two student volunteers from QUT's landscape architecture course have signed up to keep watching briefs over one treasure or another. I will get more! And these guys can really take photos (with proper cameras and everything)!

### SUGGESTED TOPICS:

- 🌿 newsy stories
- 🌿 what's flowering / fruiting
- 🌿 botanical oddities / absurdities
- 🌿 wildlife (non-human sorts)!
- 🌿 heart-stopping works of nature
- 🌿 jaw-dropping scenery! And so on.



# POSTCARDS

## Voices from the past

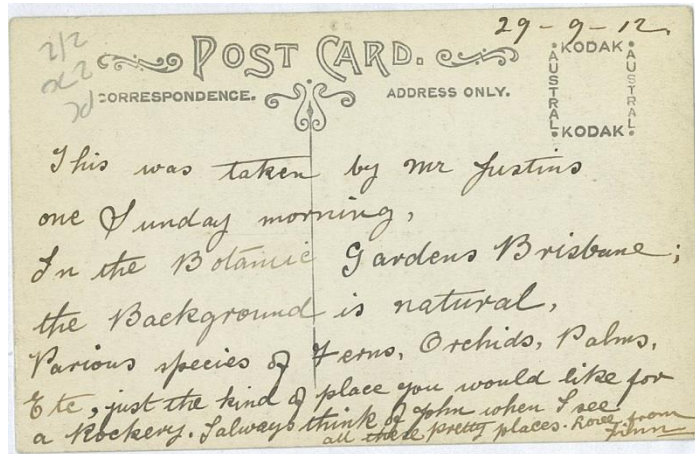
This new section presents historic postcards related to one or more of our botanic treasures. This time it is the former bush-house in the Old Brisbane Botanic Gardens in 1912.

The written descriptions are as informative as the images! The giant clam-shell fountain (and notice the plinth of coral underneath) is a wonderful surprise! I had not realised that Philip MacMahon had created such a fountain in his lovely bush-house, or maybe it is the work of the next Director, J.F. Bailey. Intrigue!

Transcriptions:

(1) Dated 29 September 1912

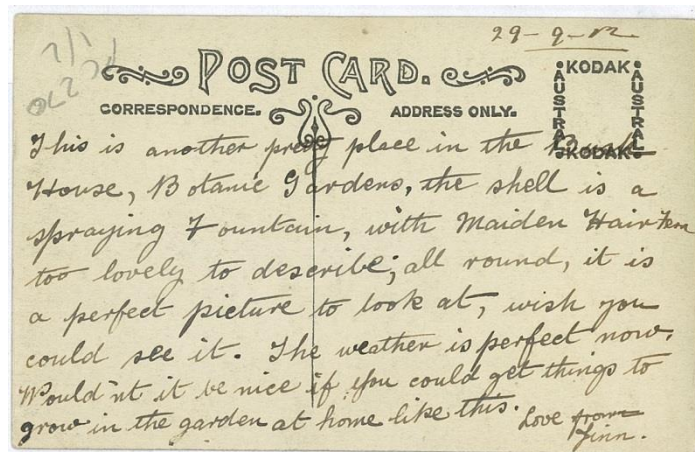
*This was taken by Mr Justins one Sunday morning, In the Botanic Gardens Brisbane; the Background is natural, Various species of Ferns, Orchids, Palms etc., just the kind of place you would like for a Rockery. I always think of John when I see all these pretty places. Love from [?] Jinn.*



Postcard (1)

(2) Dated 29 September 1912

*This is another pretty place in the Bush House, Botanic Gardens, the shell is a spraying fountain, with Maiden Hair Fern too lovely to describe; all round, it is a perfect picture to look at, wish you could see it. The weather is perfect now. Would'n't [sic] it be nice if you could get things to grow in the garden at home like this. Love from [?] Jinn.*



Can you make out the name of the author? My guess is either Finn or Jinn, but neither seems quite right. If there are postcard collectors out there who know more about local providers, I would love to hear from you.

Do you have any postcards of OBBG or MCBG? Did they ever make one for Sherwood Arboretum (aka. Sherwood Forest Park)? We'd love to share the knowledge (and stories)!

Source:

*JSim Postcard Collection  
Acquired 25 May 2015.*



Postcard (2)

# PLANTspeak

## Tropical Fig Trees

*Ficus* spp.

Family MORACEAE

Did you now that the Old Brisbane Botanic Gardens in the City has an impressive collection of old fig trees?

The 1994 census recorded 80 *Ficus* specimens none of which were the common fig *Ficus carica*!

At that time, the list included:

*Ficus baileyana*

*Ficus benghalensis* [#10, #40, #327]

*Ficus benjamina*

*Ficus drupacea* var. *drupacea*

*Ficus elastica* cv. *Variegata*

*Ficus laurifolia*

*Ficus macrophylla*

*Ficus microcarpa*

*Ficus nehbudi*

*Ficus obliqua*

*Ficus parcelli*

*Ficus platypoda*

*Ficus religiosa* [#107]

*Ficus sycomorua*

*Ficus truncata* [#1210]

*Ficus virens*

*Ficus virgata* var. *virgate*

*Ficus watkinsiana*

And several other species (unnamed).

All Measurements taken 1994. Time for a new census!  
DBH = trunk diameter at about 1.2m off ground.



OBBG Tree Survey #0049

*Ficus benghalensis*

Indian Banyan

on Alice Street boundary (JSim 2004)

Origin: from India & Pakistan.

H 20.7m x W 30m x DBH c.13m

Planted between 1864-1874 with the other Alice Street boundary trees so as to enclose the former Queens Park. This tree shows the action of its aerial roots as they rip apart the 1865/85 cast iron fence and stonewall and head west across the footpath. Calcutta Botanic Gardens has a banyan planted 200 years ago covering over 1.6 ha.

Nickname: THE INVADER!



OBBG Tree Survey #0327

*Ficus benghalensis*

Indian Banyan

near QUT boundary, opposite U Block (JSim 2014)

Origin: from India & Pakistan.

H 20.4 x W 35m x DBH c.13m

Planted in the 1870s along the boundary with the Domain of Old Government House, this is one of three thriving banyans in the Gardens. These trees are sacred to Hindus who believe Brahma was transformed into a banyan, which retains his spirit. These trees live long and grow very large as the aerial roots from branches stretch down to the ground, take root and become new trunks. Traditionally, the Indian merchant caste, called the Banians, set up their market stalls beneath the protective canopy.

Nickname: SCHOLAR'S BANYAN



OBBG Tree Survey #0107

*Ficus religiosa*

Peepul; this is a Bodhi tree

Near Rotunda (JSim 2005)

Origin: from India to SE Asia.

H 25.2m x W 42m x DBH 2.2m

Planted in the 1870s, this is another sacred tree, also known as the tree of wisdom. Buddha was meditating under a Peepul tree when he achieved enlightenment. The Hindus believe the deity Vishnu was born under a Peepul. This fig is one the few deciduous trees in the tropics, losing its leaves for a short time at the end of winter but quickly regaining a lush canopy. The lateral growth of our specimen has made intervention by an arborist

necessary: the props are vital to hold up the massive branches. The oldest living plant of known planting date in the world is a *Ficus religiosa* tree called the **Sri Maha Bodhi** planted in the temple at Anuradhapura, Sri Lanka by King Tissa in 288 BCE. The OBBG specimen is a cutting from this ancient Sri Lankan tree which is a cutting off the original tree where Buddha rested.

Nickname: OUR BO TREE!



OBBG Tree Survey #1210

*Ficus retusa*

Fig

syn. *Ficus truncata*

on Alice Street boundary (JSim 2004)

Origin: from India to Southeast Asia.

H 21.9m x W 39m x DBH 4.8m

This fig has an interesting identification history and can be confused with *F. microcarpa*. It was identified as *F. truncata* in 1994. This fig was planted about the 1870s and was a huge tree in the photographs (dated between 1902 and 1910) when its generous shade was used to shelter *al fresco* dining for the adjacent second kiosk (burnt down 1910). It has long been a favourite place to mark a visit by lovers with hearts, dates and initials covering much of the distinctive close curtaining of aerial roots. It has one of the widest canopies in the Gardens.

Nickname: BIG FIG!



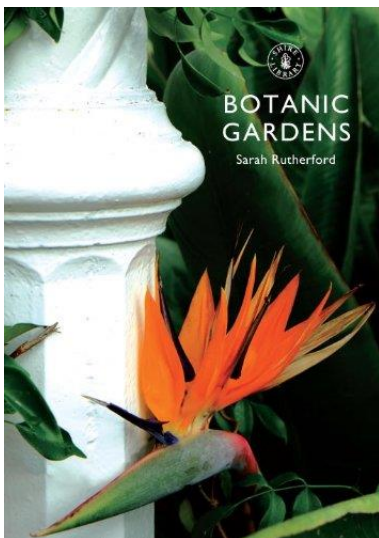
Banyan (#0049) close-up of roots! Truly AWESOME!

## History EXPOSÉ

# Botanic Gardens: purposes & arrangements

By Jeannie Sim

Writing histories and investigating the purposes of botanic gardens have been undertaken for many decades by a range of scholars. Currently available publications include some generously illustrated accounts of famous places in colourful coffee-table formats and discrete little booklets full of data and scholarly interpretations. I have prepared an illustrated lecture for my landscape architecture history students that I will share with members of the foBBGSA in the near future. Apart from the historical development of living plant collections I have some unusual insights into the sorts of collections and the arrangements of plant displays that resonate with the landscape designer within.



Excellent history reference (2015) from Shire publications (in Bloomsbury group) <http://www.bloomsbury.com/au/botanic-gardens-9780747814443/>

The purposes of public botanic gardens have changed over time but the key constant has been scientific enquiry. At first the collection of living plants and

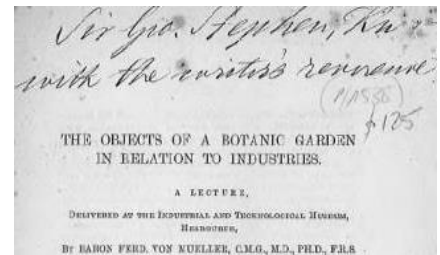
their supporting dried plants collection called a herbarium, was targeted at training medical professionals, including apothecaries and doctors. As European empire expansion developed in the 18<sup>th</sup> and 19<sup>th</sup> centuries, the purpose of displaying and testing new plants was strongly linked to establishing new economic industries at home and in the colonies. The usefulness of plants is critical to human survival on many levels, not just as food sources. The age of economic botany peaked in the 19<sup>th</sup> century but remains a feral treasure house of opportunities. Today the thrust of human survival is linked with climate change and loss of biological diversity at a global level of scale. Botanic gardens in the early 21<sup>st</sup> century are often focused on ex-situ conservation of rare plant species and supporting emerging nations to conserve their national and natural resources in-situ. Today, botanists are still focussed on the usefulness of plants, with ethnobotany providing essential insights into indigenous use of plants.

However, this article serves as companion piece to my talk on botanic gardens in history and it reveals some earlier sources on this topic, namely two intriguing papers written in 1871 and 1915 by directors of botanic gardens. Today we enjoy the benefits of digitised historical documents that allow ready access to rare and far away originals. In this way, scholars and enthusiasts can readily read these accounts. Check out the citations at the end of this article.

Von Mueller and Hill were neither landscape designers nor garden historians but botanical scientists and yet their ideas about plant collections have influenced botanic collections and our understanding of their objects or purposes ever since.

**Baron Ferdinand von Mueller** (1825-1896) was director of the Botanic Gardens, Melbourne (1857-1873) as well as the Government Botanist of Victoria. He was asked to deliver a lecture at the Industrial and Technical Museum Melbourne in 1871 and his essay was published later under the title "The Objects of a Botanic Garden in relation to Industries". Over 38 pages in length (now that's a lecture!), von Mueller demonstrated in this essay all the useful purposes humans have found for plants and their products

beyond vital food sources. This area of economic botany is fascinating and makes particular sense to practical politicians when curators have to justify the importance of botanic gardens and botanical research.



A digital version sourced from: <http://trove.nla.gov.au/work/13734142?selectedversion=NBD5679472>

Von Mueller considered education of visitors to be a vital function of botanic gardens so he stressed displaying collections that assisted in learning about plants and science in general and specifically about useful plants. Fundamental to this educational outcome was labelling plants and providing a System Garden, which was a collection of living plants (typically herbaceous or juvenile plant forms) sorted into taxonomical groups, such as families. Their visual character tended to be utilitarian, like a well ordered Kitchen Garden. The content of System Gardens or Order Beds changed as taxonomical systems evolved, but the utilitarian character remained constant. RBG Kew still has a large System Garden.

An intriguing note in von Mueller's essay reads: "The Lecture was illustrated by a large number of growing Plants of industrial value, also by numerous Products and Educts derived therefrom [substances extracted chemically], as well as by various Museum Plants [herbarium specimens], Physiognomic Pictures of Vegetation and other Drawings." Such a wealth of tangible material would have made that lecture most interesting.

At Brisbane Botanic Gardens, Walter Hill collected and had prepared displays of timbers from Queensland rainforests that were used in various International Exhibitions (and won awards) and this collection finally rested in the BBG Botanical Museum. Many items moved with the position of Government Botanist in 1880 as Frederick Manson Bailey took over from Walter Hill. The building itself lasted until the 1960s when the DPI

moved the Queensland Herbarium to Indooroopilly. Tracking down this timber collection is a worthwhile target for anyone with historical detection skills. If it is lost, wouldn't it be wonderful as a project for our Friends group to remake this display set?

Sara Maroske in the *Oxford Companion to Australian Gardens* (2002,143) hinted that von Mueller believed gardeners could be 'slaves to fashion' when it came to arranging plants and that scientists could do a better job at laying out botanic gardens. There are some interesting stories about the change over from von Mueller to William Guilfoyle at RBG, Melbourne in 1875. Guilfoyle was charged with making the place more acceptable to visitors and set about redesigning the layouts and plant collections that von Mueller had established. For more behind this story, please read the excellent article by Janet Heywood on "marginalia" (comments in margins of published works), specifically Guilfoyle's comments on von Mueller's 1871 essay. Guilfoyle wanted both education and recreation in inspiring landscapes.

**Arthur William Hill** (1875-1941) was Assistant Director, Royal Botanic Gardens, Kew when he published "The History and Functions of Botanic Gardens" in the esteemed *Annals of the Missouri Botanical Garden* in 1915. His opening sentences are intriguing: "There are three things which have stimulated men throughout the ages to travel far and wide over the surface of the globe, and these are gold, spices and drugs." This is a reminder about the overt/covert motivations behind establishing botanic gardens in the colonies by British, Dutch, French or Portuguese Empire builders. Our Old Brisbane BG is no exception as a colonial establishment that tested and propagated plants for local colonists and also contributed to the wider RBG Kew network that spanned the British Empire.

The second half of Hill's paper contains descriptions of ways of displaying plants, usually based on educational requirements at different times, which he calls Functions of Botanic Gardens. This section provides many key observations about the arrangement of botanical collections. In most cases examples still exist in contemporary botanic gardens, while

the current emphasis on community support, sustainability, biodiversity and conservation has been added to or derived from these older formations.

It is important to remember that Ecology (understanding the whole floral and faunal assortment as an interconnecting system) was a new idea, having been first published in 1895 by Danish botanist Eugen Warming (*Oecology of Plants*).

In summary, Arthur Hill lists nine categories of plant collections:

- 1) **Split arrangement**  
herbaceous plants within a physic garden originally and arboretum, both arranged scientifically according to current taxonomic categories
- 2) **Morphological arrangement**  
collections of specific plant forms and properties, e.g. bulbous, fragrant, poisonous, prickly, etc. and these can blur easily into the themed category
- 3) **Geographical arrangement**  
sorted into area of origin, e.g. American Gardens, Australian, Chinese, etc. but blurs into ecological collections of biomes or bioregions, e.g. Alpine Rock Garden, Mediterranean climates across the world, etc.
- 4) **Ecological collections**  
Imitating naturally occurring plant formations or vegetation groups, e.g. in Australia: Freshwater Wetlands; Coastal Heath; Tidal wetlands; Dunes & Headlands; Open Shrublands /spinifex understorey; Shrublands; Closed/Open Scrub & Heath; Open Woodlands; Woodlands ; Open Forests; Closed Forest (Rainforest) tropical or temperate; Alpine Herblands; Herblands as listed in Read 1994.
- 5) **Useful plants**  
(economic botany on display!) including food & drink sources for humans & stock; poisons to humans, animals, plants; plants yielding drugs, healing/cleaning agents; perfume-yielding plants; wearable materials (fibres & beads\* for weaving, twining, sewing, crafts, jewellery); dyes for colouring fibres or paint; furniture & building materials; oils, waxes, gums, resins, tannins; and also sacred and ceremonial plants.
- 6) **Fossil Gardens**  
originally samples of coal with plant fossils inside, but could be displayed with living plants that can be seen in fossil record, e.g. Wollemi pines, cycads, ferns, etc.
- 7) **Chronological Borders**  
a record of exotic plant introduction relevant to a particular country.
- 8) **Themed compartments**  
(everything else!) Often with distinctive names of garden types, e.g. **Bambooserie** for bamboos (French);

**Fernery**: different ferns & their allies;  
**Mossery**/Moss House: different mosses and allies;  
**Nuttery**: plantation of nut-trees;  
**Palmetum**: palms or palm-like;  
**Pinetum**: conifers (pines, cypress; gymnosperms);  
**Rosarium**, or Rosary: rose garden;  
**Succulentarium**: for cacti and succulents;  
Carnivorous plants;  
Orchid Garden/House; Bog Garden; (Fresh) Water Garden; Rain Garden; Healing Garden; Teaching Garden, Poisonous / Dangerous plants, Butterfly garden, etc.

- 9) **Plant Physiology**  
a favourite of Arthur Hill, but a mystery to me, since physiology is about the inner workings of plants and not easily put on display. I would love to get a botanist's opinion here.

However I can envisage another important category: **design useful**. These sorts of plants are the ones we landscape architects and garden designers use in various clever ways to provide spatial definition (walls, floors, ceilings), climatic amelioration (for shade: heavy, dappled or seasonal), for windbreaks, hedging, edging, feature specimens or sculptural effect or silhouette effect, for cut flowers/foliage, for toxic soil or water remediation, and so on. These would be demonstration gardens of a design sort. Occasionally, you can find a botanic garden with a tapestry hedge, where suitable hedging plants are on display, but planting design displays are not common.

Don't forget to watch for the talk notice, coming soon!

#### REFERENCES:

- Heywood, Janet 2012. In the margins: William Guilfoyle in conversation with Ferdinand von Mueller. *Australian Garden History*, Vol.24, Issue 1, 6-9.
- Hill, Arthur W. 1915. "The History and Functions of Botanic Gardens". *Annals of the Missouri Botanical Garden* 2 (1/2). Missouri Botanical Garden Press: 185-240. doi:10.2307/2990033.
- Maroske, Sara "Mueller, Ferdinand Jakob Heinrich von" In Aitken Richard & Looker, Michael 2002. *The Oxford Companion to Australian Gardens*. Melbourne: Oxford University Press, pp. 143-144.
- Mueller, Ferdinand von 1871. *The objects of a botanic garden in relation to industries: a lecture delivered at the Industrial and Technological Museum*. Melbourne: Mason, Firth & McCutcheon.
- Read, Ian G. 1994. *The bush: a guide to the vegetated landscapes of Australia*. Kensington, NSW: University of New South Wales Press.

\*check out **Tagua** nut jewellery from hard seeds of certain palms (*Phytelephas* spp.)! See: <http://www.oxfamshop.org.au/>

## Plant Collections for BBGs (hillside and riverside)!

When you consider a botanic garden as an educational opportunity beyond the sheer enjoyment of plants and green spaces, what kinds of living plant collections would you like to visit?

Let's start making a list of wishes for our Brisbane Botanic Gardens!

I really want a **Fossil Garden** after seeing the Petrified Forest at Xianhu Botanic Garden, at Shenzhen, Guangdong Province, China. Mind you, I have a pronounced "grotesque sensibility" which others find ugly!



Xianhu Botanic Garden [www.oktrips.com](http://www.oktrips.com)

Please send your comments and ideas to [info@fbbgsa.org.au](mailto:info@fbbgsa.org.au)

§

## Coalition News!

### FoSA and FoBBGSA

Our two Friends groups have come to an understanding where FOSA will become an honorary **Corporate Member** of FoBBGSA and their individual members are welcome to join for themselves and be eligible for election as Directors. This new category of membership will require a General Meeting to create.

We are stronger as partners with many common goals, and this way FOSA will be able to continue to provide on-the-ground service to Sherwood Arboretum. We look forward to closer ties in the future.

§



Brisbane's living treasure

## FoSA News

### Friends of Sherwood Arboretum

The trees are the 'stars' again! Sherwood Arboretum has officially joined the ranks of Brisbane's two botanic gardens at Mount Coot-tha and the City.

After more than half a century of being managed as a park, Brisbane City Council has placed the Arboretum under the professional care of Mr Dale Arvidsson, Curator of Brisbane's Botanic Gardens.

Cr Matthew Bourke, Chairman of Council's Environment, Parks and Sustainability Committee, said that Mr Arvidsson was now responsible for the future care of the Arboretum's stunning tree collection.

"This will ensure that this 90-year-old Arboretum, which sits alongside the Mount Coot-tha and City Gardens in terms of its botanical significance, will receive a much higher level of professional care," Cr Bourke said.

"This is simply the right thing to do if we are to ensure Brisbane's heritage-listed Arboretum is to remain an inviting and valued treasure for many future generations of residents and visitors to enjoy."

The Arboretum's collection, which was previously managed by Council's Parks team, was last placed under the care of the Brisbane Botanic Gardens Curator for a short period in July 1957.

The Friends of Sherwood Arboretum Association and their many community supporters have warmly welcomed Council's decision which follows on the Arboretum's landmark 90<sup>th</sup> anniversary year in 2015.

Sherwood Arboretum was considered a pacesetter in Australia in the 1920s by its focus on native trees at a time when exotic trees from across the world were considered much more worthy of attention in our botanic gardens and arboreta.

One of the iconic features of the Arboretum is an avenue of 72 Queensland Kauri trees, planted by a wide cross-section of Brisbane's community to celebrate the official opening on 21 March 1925.

Today, the Arboretum's collection includes more than 1000 Australian native specimen trees.

The Arboretum offers visitors a wonderful choice of experiences with its sweeping river vistas as a perfect backdrop for picnics and walks and a wetlands teeming with birdlife.



Cr Bourke (left) and Dale Arvidsson share the good news with Sherwood State School students Ruby, Sophia, Zac and Brendan.

— **Andrew Benison** (President)  
Email: [ilovesherwoodarboretum@gmail.com](mailto:ilovesherwoodarboretum@gmail.com)

### Where is Sherwood Arboretum?



School children's art (love it!): the mural at Sherwood Railway Station.

<https://www.flickr.com/photos/brisbanebuses/9573409420>

§

**160 years of OBBG:  
celebrating Walter Hill's Ideas**

Dale Arvidsson has been able to share some of the rationale behind the recent tree planting that started in 2015 in the Brisbane Botanic Gardens, City. It's heartening to realise how much care has gone into this selection process.

"The anniversary of 160 years celebrates [Walter] Hill's original vision for the Gardens, helps rebuild lost collections and embraces opportunities to embellish and communicate cultural significance of this special place.

All new tree planting must be in accordance with the Conservation Plan, Master Plan and Vegetation Management Plan, and as such should:

- add to the cultural significance of the site by expanding or reinstating existing or lost collections.
- reinstate traditional patterns like avenues.
- emphasise the 'Tropicalian' character of the site
- not reduce or compromise open grassed areas and historic vistas because they are critical to the character, use and cultural significance of the Gardens

The following ideas will be developed to create relevant statements and (future) interpretative opportunities:

**ECONOMIC PLANTING**

In the 1875 catalogue of plants, 30% of all plants in the Gardens were economic plants including plants for food, cropping, medicine, textiles and dye. Today the majority of these plants are absent. Fruit trees will be reintroduced in the Middle Gardens.

**INDIGENOUS PLANTS**

Hill collected many indigenous plants and trialled them in the Gardens. Although there are still native plants in the Gardens there is no dedicated display of indigenous plants or Bush Tucker. The Queensland Border and Rainforest will be embellished with native mid-storey trees.

**GUAVA COLLECTION**

Over time much of the Guava collection has been lost and only one tree remains. Additional specimens will be planted to return this unique collection to the Gardens.

**PALM COLLECTION**

Many palms have flourished in the palm garden, however, less common specimens have been lost and the current collection will be expanded to create a more complete collection of world palms. An 'ethnobotanic palm avenue' linking the Formal Garden to the Camellia Arbour, will be planted.

**PINETUM**

Walter Hill planted a collection of Pines and Conifers along the border with Queens Park. Many specimens were lost after the floods in the late 1800s and have not been replaced. The collection will be expanded as part of the 160 year celebrations into a great gymnosperm collection.

**COMPARTMENT A - DOMAIN**

- Add shade and colour and a sense of entry to the Goodwill Bridge Plaza using native species.
- Reinstatement of riparian vegetation to stabilise the riverbank.

**COMPARTMENT B - RAINFOREST**

- Limited replacement of species that are in decline.
- Improve the Gardens entry between QUT and the Gardens Club Kiosk [former Curator's Cottage].

**COMPARTMENT C - KIOSK SURROUNDS**

- Add to the Queensland Border East

**COMPARTMENT D - WESTERN AREAS**

- Consolidate the palm collection.
- Reinstatement of the Guava collection and extend the area to include other fruit trees.

**COMPARTMENT E - MIDDLE GARDENS**

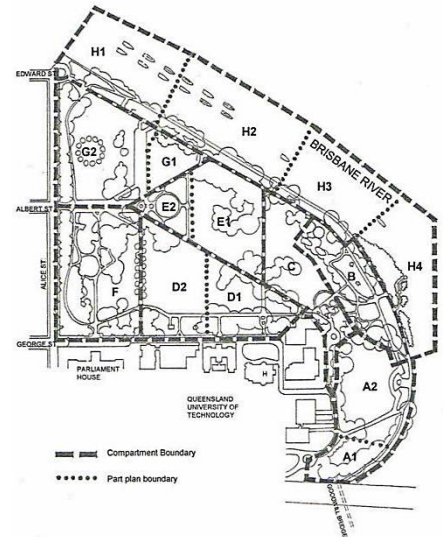
- Create an economic palm avenue.
- Provide definition around the flower garden.
- Add complexity to the Queensland Border Mid East.

**COMPARTMENT F - LAGOONS**

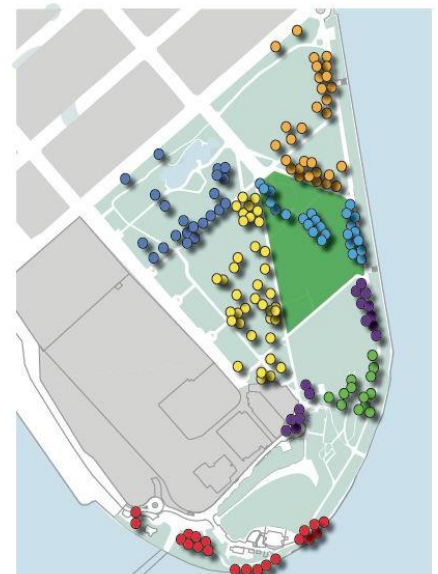
- Reinstatement of palm avenue.
- Upgrade the conifer and pine connection.
- Infill the line of figs along Alice Street.
- Reinstatement of lost specimen trees.

**COMPARTMENT G - NORTHERN AREAS**

- Reinstatement of the 'tropicalian' woodland canopy.
- Provide additional playground shade.
- Add planting to the Queensland Border.
- Replace Alice Street border specimens that are in decline."



Plan of All Garden Compartments (pg 36 in the *Conservation Plan Review 2005*). Who do you blame for this compartmental categorisation? The author of the 1995 *Conservation Plan* of course (me! Dr. Jeannie Sim).



This diagram illustrates the spread of 160 new trees across the gardens.

Broad overview of 160<sup>th</sup> Anniversary tree plantings.

We will arrange a guided tour soon so the Volunteer Guides can show us a selection of these new trees.

Meanwhile, Dale provided the full list of species to be planted (see next page). He also provided a detailed explanation of 14 extra special trees which we will add to the website for your reading pleasure!



FULL SPECIES LIST

(116 species forming 160 specimens):

*Albizia julibrissin* 'Rosea'  
 Axehandlewood *Aphananthe philippinensis*  
 Black Pine *Sundacarpus amarus*  
 Black Plum *Diospyros australis*  
 Blue Lantan Palm *Latania loddigesii*  
 Bombax *Bombax costatum*  
 Bottle Palm *Hyophorbe lagenicaulis*  
 Brown Pine *Podocarpus fasciculus*  
 Brown Silky Oak *Darlingia darlingiana*  
 Browns Aglaia, Boodyarra *Aglaia brownii*  
 Brush Box *Lophostemon confertus*  
 Bumpy Satinash *Syzygium cormiflorum*  
 Buri Palm *Allagoptera caudescens*  
 Callicoma *Callicoma serratifolia*  
 Cape Chestnut *Calodendron capense*  
 Celerywood *Polyscias elegans*  
 Champagne Palm *Hyophorbe indica*  
 Chestnut *Castanea sativa*  
 Cliff Date Palm *Phoenix rupicola*  
 Pecan Nut *Carya illinoensis*  
 Coconut *Cocos nucifera*  
*Cocos* 'Malay Dwarf'  
 Colvillea *Colvillea racemosa*  
 Cooktown Fan Palm *Livistona concinna*  
 Corduroy Tamarind  
     *Mischarytera lautereriana*  
 Crepe Myrtle *Lagerstroemia 'Natchez'*  
 Crystal Creek Walnut *Endiandra floydii*  
*Dacrydium pectinatum*  
 Daintree Penda  
     *Lindsayomyrtus racemoides*  
 Desert Fan Palm *Washingtonia filifera*  
 Dragon Tree *Dracaena arborea*  
*Dyopsis onilahensis*  
 Eungella Tamarind  
     *Sarcotoechia heterophylla*  
 Fairy Paintbrushes  
     *Archidendron grandiflorum*  
 Flecker's Hard Alder *Neostrearia fleckeri*  
 Florida Thatch Palm *Thrinax radiata*  
 Flowering Plum *Prunus × blireaena*  
 Forest Red Gum *Eucalyptus tereticornis*  
 Giant Ironwood *Backhousia subargentea*  
 Grease Nut *Hernandia bivalvis*  
 Guava: *Psidium littorale* 'Yellow Cherry'  
     and 'Red Cherry', *Psidium guajava*  
     'Thai White', *Psidium guineense*  
     Brazilian guava  
 Hawaiian Fan Palm *Prichardia*  
     *hildebrandii*  
 Heart Leaved Bosistoa *Bosistoa transversa*  
 Jacaranda *Jacaranda mimosifolia* and  
     *Jacaranda mimosifolia* 'Alba'  
 Jamaican Thatch Palm *Thrinax parviflora*  
 Japanese Yew  
     *Podocarpus macrophylla* 'Maki'  
 Kapok *Ceiba pentandra*  
 Large-leaved Wilkea *Wilkea macrophylla*  
 London Plane Tree *Platanus × acerifolia*  
 Macadamia Nut *Macadamia integrifolia*  
 Malabar Chestnut *Pachira aquatica*  
 Mango *Mangifera indica* 'Kensington  
     Pride'  
*Marojejya darianii*  
*Marojejya insignis*

Maya Palm *Gaussia maya*  
 Monkey Puzzle Tree *Araucaria araucana*  
 Moore's Kauri *Agathis moorei*  
 Mountain Araucaria *Araucaria montana*  
 Mt Spurgeon Plum Pine *Prumnopitys ladei*  
 Mulberry *Morus alba* 'Chaparral'  
*Myrsine* sp.  
 Muttonwood *Myrsine variabilis*  
 Myrtle Ebony *Diospyros pentamera*  
*Nageia fleuryi*  
 Native Almond *Bosistoa pentacocca*  
 Native Tamarind *Diploglottis australis*  
 Northern Davidson's Plum  
     *Davidsonia pruriens*  
 Northern Lancewood *Dissiliaria indistincta*  
 Oil Palm *Elaeis guineensis*  
 Old Man Palm *Coccothrinax crinita*  
 Olive *Olea europaea*  
 Pacific Kauri *Agathis vitiensis*  
 Peanut Tree *Sterculia quadrifida*  
 Pine Mountain Coral Tree  
     *Erythrina numerosa*  
 Pink Dogwood *Cornus 'Eddie's White  
     Wonder'*  
 Pink Shower *Cassia javanica*  
*Podocarpus nerifolius*  
 Poinciana *Delonix regia*  
 Prickly Ash *Orites excelsus*  
 Queen Palm *Syagrus romanzoffiana*  
 Queensland Kauri Pine *Agathis robusta*  
 Queensland Tree Waratah  
     *Alloxylon flammeum*  
 Raosy Palm *Dyopsis scottiana*  
 Red Cedar *Toona ciliata*  
 Red Kauri *Agathis corbassonii*  
 Red Lantan Palm *Latania lontaroides*  
 Red Oak *Carnarvonia araliifolia* var.  
     *montana*  
 Red Silk Cotton Tree *Bombax ceiba*  
 Rose Tamarind *Arytera divaricata*  
 Rule's Araucaria *Araucaria rulei*  
 Rusty Silky Oak *Darlingia ferruginea*  
 Sago Palm *Metroxylon warburgii*  
 Sand Palm *Allagoptera arenaria*  
 Satake Palm *Satakentia liukiensis*  
 Smooth Davidson's Plum  
     *Davidsonia johnsonii*  
 Smyrell's Clausena *Clausena smyrelliana*  
 Southern Davidson's Plum  
     *Davidsonia jerseyana*  
 Sugar Palm *Arenga pinnata*  
 Synima *Synima cordierorum*  
 Tamarind *Tamarindus indica*  
 Tree of Gold *Barklya syringifolia*  
 Tulip Satinwood  
*Rhodosphaera rhodanthema*  
 Weeping Cabbage Tree Palm  
     *Livistona decora*  
 Whalebone Tree *Streblus pendulina*  
 White Bauhinia *Lysiphyllum hookeri*  
 White Beech *Gmelina leichhardtii*  
 White Cyperus *Callitris glaucophylla*  
 White Tamarind *Cupaniopsis baileyana*  
 Whitsunday Hoop Pine *Araucaria  
     cunninghamii* (glaucous form)  
 Yellow Mangosteen  
     *Garcinia xanthochymus*  
 Yellow Tulip *Drypetes deplanchei*  
 Ylang Ylang *Cananga odorata*



Mary Jo Katter and Jeannie Sim helped Dale Arvidsson plant this *Dracaena arborea* (on 21 December 2015). Location is in Old Government House Border.



And here she is in January 2016, the Queen of the border next to the very old Ponytail palm. QUT's X block and Gardens Theatre is in the background.



§

# Visitor Centre

Brisbane Botanic Gardens,  
Mount Coot-tha

## BIG NEWS!

Brisbane City Council has a proposal for a new Visitor Information Centre (VIC) at the Development Application stage and therefore in the public realm for all to peruse. You can download all the documents from the PD online website (below). Here's a summary.

### Where is it to be located?



The new 'entry' into the MCBG will be through the Visitor Information Centre located between the Planetarium and the Restaurant at the edge of the carpark (coloured orange in this aerial view). The Admin/Library/Auditorium complex is on far left.

### What does it look like?



The understated minimal design uses the familiar Mt Coot-tha bluestone that blends well with the existing curved retaining walls in this location and across the while MCBG. There is an existing line of mature palms (*Washingtonia robusta*) that will provide a fine planted accompaniment to the building. Great care has been taken to provide accessible paths up the slopes to the building platform, which has one floor level.



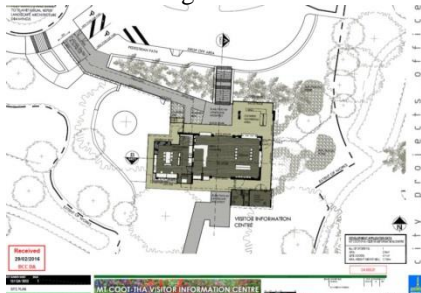
Overall Site plan shows the new building abutting the carpark near the Planetarium.



Elevations show the building settling into the landscape discretely with shady eaves and friendly surfaces of warm timber and rugged stone.

### What will the building provide?

There is inbuilt flexibility for various future possibilities. The Volunteer Guides will finally have a useful and effective space to run their important greeting and guiding operations. There will be ample display spaces for interpretation material and lots of rain/sun shelter and seating under wide eaves and awnings.



The new waiting shelter and gently ramped access path up from carpark to building will be very useful for visitors arriving by coach or car. This is only a snapshot of the possible uses of the facilities. Please refer to the proposal documents for more information.

### For Context: Existing Site Views (JS photos 5 March 2016):



Mature *Washingtonia* palms make a great entry statement. Their height makes capturing them in a photo difficult, but they look spectacular as a tree silhouette and visible from far away in the carpark.



This lovely nook under an old gum tree will be a useful open grassed space near the proposed VIC. Most of this outer curved wall will be retained as will the gumtree and surround.



This old shelter shed will be removed and the proposed new building constructed on one of the few flat areas on site.

— Jeannie Sim

§

<https://pdonline.brisbane.qld.gov.au/master/view/UI/modules/ApplicationMaster/default.aspx?page=wrapper&key=A004333980>

Some screenshots of the PDFs where taken to illustrate this article.

# Volunteer Guides News

By Bettina Palmer

## Australasian Conference of Volunteer Guides in Botanic Gardens Sydney 21 – 25 September 2015

It was a cold, dark, rainy week that greeted visitors to Sydney's Royal Botanic Gardens at the tail end of a wonderful temperate Spring bounty. Of course, the northerners stood out because they did the most gaping at the magnificent beds of tulips, lilacs, rhododendrons, wisteria, peach and cherry blossoms.

A biennial gathering of representative Volunteer Guides from 16 City and Regional Botanic Gardens from around Australia and New Zealand have been meeting in a different host city since 1997. Prior to that Melbourne and Adelaide had been exchanging notes and companionship for some years before to extending the invitation nationally and further extending to New Zealand in 1991.

The 122 delegates were treated to presentations and attended discussions in the Auditorium of the Museum of New South Wales, broaching subjects as deep and meaningful as: the purpose of a botanic garden; the challenges and relevance in a changing environment: seeking finance; climate change; technical advances in communications, genomics, and data collection; as well as training and partnerships.

Guided walks and workshops included the History of RBG Sydney (celebrating 200 years in 2016); Indigenous Plant Use; Food Foraging for Early Settlers; Native Fauna; Geology and Geography; a brilliant introduction to the works of Artist in Residence Charlotte Thodey; a lesson in Cabbage Tree Hat Weaving; and a day at the Mt. Annan Annex with a special tour of the Millennium Plant Bank.

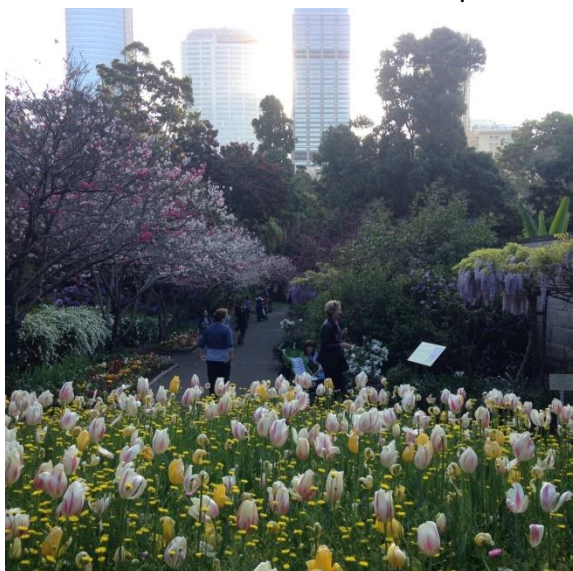
The local Friends of the RBGS and Domain Trust also offered a Post-Conference Tour over 3 days, of the New South Wales South Coast and Hinterland.

This tour included several small Regional Botanic Gardens, local Rainforest Reserves and some private properties including Arthur Boyd's property at Bundanon, gifted to the public to inspire Australian Artists.

As ever, it was the networking and camaraderie that these events generate; leaving each registrant with a renewed vigour for offering their extended knowledge as well as current and enthusiastic engagement with the visiting public of their own Botanic Gardens.

The next Guides' Conference will be hosted by the ANBG in Canberra in 2017 following their "Floriade" with Perth planning to host in 2019.

§



LEFT: Spring Flowers at RBG Sydney. LEFT: Brisbane Delegates in 2015 to the 14th Australasian Conference of Volunteer Guides in Botanic Gardens. From L to R: Hazel Wood, Margaret Prentice (President), Merylyn Neale (Admin) Bettina Palmer (Liaison) and Sue Ogilvie (absent: Fay O'Sullivan photographer).

If you are interesting in joining our Volunteer Guides (who service both the City BBG and Mt-Coot-tha), here are the contact details:

Email

[BotanicGardens@brisbane.qld.gov.au](mailto:BotanicGardens@brisbane.qld.gov.au)

or telephone Council on 07 3403 8888.

### TAKE A GUIDED TOUR!

There are two walks every day except Sunday: at 11am and 1pm and each lasts for an hour. They are free and individuals can just turn up at the Rotunda in the city or the Information Kiosk at Mt Coot-tha a bit beforehand.

FoBBGSA plans to organise special guided tours for members in the future. These would target particular interests, e.g. historic plants, new plantings, birds, artwork, and so on. Please let us know if these topics or anything else tickles your fancy!

## BIG MAY EVENTS!

### Botanique Art Bazaar

May 24 until May 29, 2016  
at the **Richard Randall Art Studio**,  
located in the Brisbane Botanic  
Gardens Mt. Coot-tha Road, Toowong.



The work of thirteen artists working in textiles, ceramics, jewellery, paper and mixed media, offering interpretations of the natural environment will be exhibited and offered for sale for one week in May. Proceeds will go to the Friends of Brisbane Botanic Gardens and Sherwood Arboretum.



Of special interest, will be the new work by Brisbane artist **Sue Mansill** "The Essence of Brisbane". Painting in watercolour, pen and wash, her impressionistic style has developed from a love of *Pleine Aire* painting. Sue chooses to paint outdoors with real life moving around her, each scene continually changing, new elements coming in and out of view. She works quickly to select what is committed to paper, resulting in a crisp minimalism. Her paintings leave something to the imagination of the viewer. "Brisbane is a wonderfully liveable city. Beautiful and vibrant, changing with the seasons. It is a delight and a challenge to try to capture the essence of our city in watercolour." Sue added, "Our last jacaranda season was a particularly good one, I just wanted to get out there to the parks and promenades to get it down on paper."

Admission is free. Carparking is free!

All Enquiries to: **Bettina Palmer**  
Mob: 0405 402 340

### OPEN EVENING

6pm, Thursday 26 May 2016  
at the Brisbane Botanic Gardens  
Mt. Coot-tha Road, Toowong.

**Dale Arvidsson** will be speaking at the evening function at Brisbane Botanic Gardens, Mt Coot-tha. Watch out for other events to mark the inaugural **National Botanic Gardens Open Day** ([www.botanicgardensopenday.org](http://www.botanicgardensopenday.org)) of BGANZ [Botanic Gardens of Australia and New Zealand].

The Friends of BBGSA plan to be part of this event and take this opportunity to launch our calendar of events and activities properly!

§

We will be sending out notices by email for the individual monthly TALKS (once a month for April through to October), confirming lecture topic, speaker, location and dates. Please come along!

### EASTER GREETINGS!



Best wishes for all  
members, families, friends,  
and pets! 😊

Tolerance and kindness,  
and compassion  
are great gifts to give & receive.

## OUR ACTIVITIES

§

At glacial speed we are making headway! Our current targets are six major areas of interest to get moving in 2016. They match up with most of the interests members have nominated in their application forms, but we can always refine and improve!

☺ TALKS	⚙️ WALKS
🌱 GROWING	✂️ Gardening
📄 Newsletter	👋 SOCIALS

#### TALKS

We will host educational lectures and forums to feed our members' curiosity and thirst for knowledge!

#### WALKS

We see lots of opportunities for guided visits to our own sites, special private gardens, allied nearby botanic gardens and special events like the Toowoomba Carnival of Flowers.

#### GROWING / GARDENING

We are trying to get this group underway but with no available nursery space at MCBG, we are languishing. However, let's get a register of interest and some leadership nominations! Please contact [info@fbbgsa.org.au](mailto:info@fbbgsa.org.au) to sign up!

#### NEWSLETTER (4 issues per year)

At the moment, we will publish the newsletter using the email system for distribution of a PDF version. We thought it too wasteful of precious resources to do a print run and post it.

#### SOCIALS (3 plus more!)

So far we have identified several fund-raising events that link art and plants in a big way, for example Bettina Palmer's "**Horti-Couture**" night and her art/craft sales events called **Botanique Bazaars**. That's for starters!

What else would you like to see us doing?

§

# 2016 CALENDAR for FoBBGSA

Friends of Brisbane Botanic Gardens & Sherwood Arboretum [www.fbbgsa.org.au](http://www.fbbgsa.org.au)

<b>JANUARY</b>	<b>Qld School Hols to 25 Jan</b>
Friday 1 Jan	<b>New Year's Day</b>
Tuesday 26 Jan	<b>Australia Day</b>
<b>FEBRUARY</b>	
6 – 7 February	International Cordyline Soc. Show @ MCBG
Sunday 13 Feb	Compost and Worm Farming (Ngairé Gilligen) Kitchen in Garden @ MCBG
9.30-11.30am	
12 – 14 Feb	Aspley Orchid Society Show @ MCBG
Tuesday 23 Feb	Compost and Worm Farming (Ngairé Gilligen) Kitchen in Garden @ MCBG
9.30-12.30pm	
Saturday 27 Feb	Begonia Society of Qld Show @ MCBG
Saturday 27 Feb	Sustainable Gardening (Ngairé Gilligen) Kitchen in Garden @ MCBG
9.30-12.30pm	
<b>MARCH</b>	
12 – 13 March	<b>IPSWICH PLANT EXPO</b>
12-13 March	Palm and Cycad Soc. Aust. Show @ MCBG
16 – 20 March	<b>Melbourne Int'l Flower &amp; Garden Show</b>
19 – 20 March	West Brisbane Orchid Soc. Show @ MCBG
Late March	<b>fBBGSA Newsletter</b> issue #2 ☺
25 – 28 March	<b>EASTER</b>
26 – 27 March	Qld Orchid Society Show @ MCBG
25 Mar - 10 April	<b>SCHOOL HOLIDAYS QLD</b>
<b>APRIL</b>	
<b>tba</b>	<b>TALK #1 "Botanic Gardens in History" (Dr. Jean Sim)</b>
9 – 10 April	Bimer Bonsai Club Show @ MCBG
16 – 17 April	<b>Qld Council of Garden Clubs @ MCBG</b>
Saturday 14 April	Grow it, Cook It, Compost It (Ngairé Gilligen) Kitchen in Garden @ MCBG
12-3pm	
<b>MAY</b>	
<b>tba</b>	<b>TALK #2</b>
20 April – 1 May	Bris. Visual Arts Community Show @ MCBG
Sunday 1 May	Compost and Worm Farming (Ngairé Gilligen) Kitchen in Garden @ MCBG
9.30-11.30	
Monday 2 May	<b>LABOUR DAY</b>
7 – 8 May	Qld Rose Society Show @ MCBG
Sunday 8 May	<b>Mothers' Day</b>
Sunday 15 May	Sustainable Gardening (Ngairé Gilligen) Kitchen in Garden @ MCBG
9.30-11.30	
mid-May	<b>Open Private Garden visit</b>
20 – 22 May	Brisbane Plant Collective Fair @ MCBG
<b>last week May</b>	<b>National Botanic Gardens Week</b>
24 – 28 May	Chelsea Flower and Garden Show UK!
Saturday 29 May	Cooking with Fresh Seasonal Produce (Ngairé Gilligen) Kitchen in Grdn @ MCBG
9.30-11.30	
28 – 29 May	Floral Art Society of Qld @ MCBG
<b>23 – 29 May</b>	<b>Botanique Art Bazaar</b> exhibition & sales at Randall Studio MCBG
<b>JUNE</b>	
<b>tba</b>	<b>TALK #3</b>
4 – 5 June	Gunyah Lapidary Club Show @ MCBG
10 – 12 June	Cactus & Succulent Soc. Qld Show @ MCBG
Monday 13 June	<b>QUEEN'S BIRTHDAY</b>
Mid-June	<b>fBBGSA Newsletter</b> issue #3
Tuesday 21 June	Grow it, Cook It, Compost It (Ngairé Gilligen) Kitchen in Garden @ MCBG
9.30-11.30	
25 – 26 June	North Moreton Orchid Soc. Show @ MCBG
25 June - 24 July	<b>SCHOOL HOLIDAYS QLD</b>
<b>End of financial year</b>	<b>Annual subscriptions due!</b>

<b>JULY</b>	
<b>tba</b>	<b>TALK #4</b>
5 – 10 July	<b>Hampton Court Garden Show</b>
5 – 10 July	Pastel Society of Australia @ MCBG
8 – 10 July	<b>QLD GARDEN EXPO</b>
16 – 17 July	John Oxley Orchid Society Show @ MCBG
<b>tba</b>	<b>Sculpture Walk in OBBG</b>
22 – 24 July	Creative Glass Society Show @ MCBG
<b>Sunday 31 July</b>	<b>Planetark National Tree Day</b>
23 - 31 July	<b>SINGAPORE GARDEN EXPO</b>
Sunday 30 July	Compost and Worm Farming (Ngairé Gilligen) Kitchen in Garden @ MCBG
9.30-11.30	
31 July	Qld Camellia Society Show @ MCBG
<b>AUGUST</b>	
<b>tba</b>	<b>fBBGSA AGM</b>
<b>tba</b>	<b>TALK #5</b>
4 – 7 August	Watercolour Society Show @ MCBG
Saturday 13 August	Sustainable Gardening (Ngairé Gilligen) Kitchen in Garden @ MCBG
9.30-11.30	
13 – 14 August	Woodturners Society of Qld Show @ MCBG
Tuesday 16 August	Grow it, Cook It, Compost It (Ngairé Gilligen) Kitchen in Garden @ MCBG
9.30-11.30	
Wed 17 Aug	<b>EKKA Day</b>
????	<b>Bettina's thingy at Ekka</b>
20 – 21 August	Sogetsu Ikebana Qld Show @ MCBG
Saturday 27 August	Cooking with Fresh Seasonal Produce (Ngairé Gilligen) Kitchen in Grdn @ MCBG
9.30-11.30	
27 – 28 August	North Brisbane Orchid Soc. Show @ MCBG
<b>SEPTEMBER</b>	
<b>tba</b>	<b>TALK #6</b>
3 – 4 September	Bonsai Society of Qld Show @ MCBG
10 – 11 September	West Brisbane Orchid Soc. Show @ MCBG
16 - 25 Sept	<b>Toowoomba Carnival of Flowers</b>
17 – 18 September	Native Plants Qld (SGAP) Show @ MCBG
24 – 25 September	Geranium & Pelargonium Soc. Show @ MCBG
Late-September	<b>fBBGSA Newsletter</b> issue #4
<b>tba</b>	<b>Sculpture Walk in MBBG</b>
<b>OCTOBER</b>	
<b>tba</b>	<b>TALK #7</b>
30 Sept – 1 October	Qld Rose Society Show @ MCBG
1 – 9 October	<b>SCHOOL HOLIDAYS QLD</b>
Thurs 6 October	<b>"Horti-Couture" night!</b> MCBG AUDITORIUM booked again!
6 – 9 October	<b>BRISBANE International Garden Show</b>
7 – 16 October	<b>Botanique Art Bazaar</b> Randall Studio MCBG
8 – 9 October	Qld Orchid Society Show @ MCBG
11 October	<b>Arbor Day</b>
15 – 16 October	African Violet Society @ MCBG
Sunday 16 October	Grow it, Cook It, Compost It (Ngairé Gilligen) Kitchen in Garden @ MCBG
9.30-11.30	
22 – 23 October	Orchid Species Society Show @ MCBG
29 – 30 October	North Moreton Orchid Soc. Show @ MCBG
<b>NOVEMBER</b>	
5 – 6 November	Qld Wildlife Artists Society Show @ NCBG
12 – 13 November	Bris. Visual Arts Community Show @ MCBG
mid-November	<b>Open Private Garden visit</b>
16 – 21 November	Botanical Artists Society Show @ MCBG
26 – 27 November	Woodturners Society of Qld Show @ MCBG
<b>DECEMBER</b>	
Early December	<b>fBBGSA Newsletter</b> issue #5
16 Dec 2016	
to 22 Jan 2017	<b>SCHOOL HOLIDAYS QLD</b>
Friday 25th Dec	<b>Christmas Day</b>
	<b>Happy Holidays!</b>



# Application for Membership

Friends of BBGSA  
ABN 20 607 589 873

revised 24 March 2016

**TITLE:**      **First NAME**      **SURNAME**

Mailing ADDRESS

SUBURB      State:      Postcode

Email

Telephone/Mobile

Please complete to help planning of Activities and Events:

Your Age:    Under 18    18-29    30-44    45-59    60+

- What are your particular interests (tick as many as you like):
- Plant Propagation       Horticulture       Rambles/walks       Birds/Natural History
  - Garden Design       Heritage & History       Photography       Visit other gardens
  - Other/Suggested Activities?....       Arts/Crafts

**MEMBERSHIP:**    I am applying for the following (tick box):

- Individual Membership:  
 \$30 per annum (12 months)    **\$50 per 2 years**       **LIFETIME – \$1000**

**PAYMENT OPTIONS:**    CASH + Give this form directly to fBBGSA representative

- Payment by cheque/money order payable to **Friends of BBGSA**  
 + Post with this form to postal address below.
- Payment directly to the FBBGSA bank account with NAB Kenmore  
**BSB 084 263 Account Number: 91 416 2233** Include your surname in transaction name.  
 + Post this form to postal address below.
- Payment through **PayPal online at Website:** <http://www.fbbgsa.org.au>  
 (this PayPal process includes your contact details and interests record as well).

**Membership Officer,**  
**Friends of BBGSA, PO Box 39, Sherwood, Qld 4075.**  
 Website: <http://www.fbbgsa.org.au>      Email: [info@fbbgsa.org.au](mailto:info@fbbgsa.org.au)